

# WELCOME TO SFIMAR LIRC

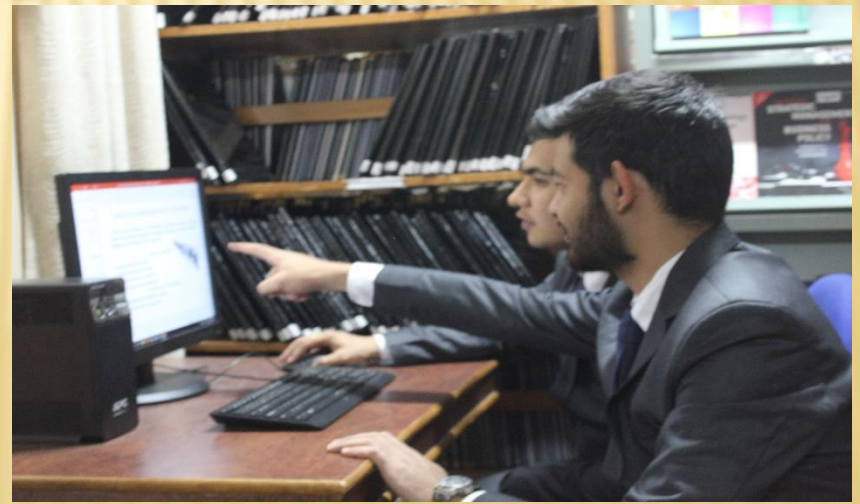
Learning and Information Resource Centre

INSPIRED BY IDEAS LIKE ACQUISITION OF  
RELEVANT KNOWLEDGE, INTELLECTUAL  
EXPLORATION AND RESEARCH

# LIRC Stack Area



# Reading Area





# LIBRARY COLLECTION

Books - 14343

CD's/DVD's - 956

Project Reports - 5054

Bound Volumes - 661

Journals (National/International) - 54

Newspapers - 15

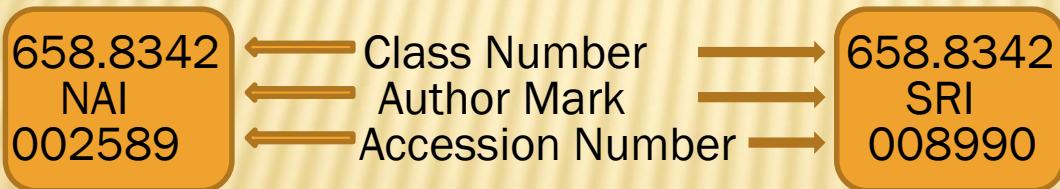
Online Databases

- Proquest (ABI Inform)
- J-Gate
- N-List
- Capitaline
- Ace Knowledge Research Portal
- Pearson E-Books package
- DELNET
- NDL
- Urkund Plagiarism Software



# How to locate a book?

- LIBRARY IS USING DDC 21ED. FOR CLASSIFICATION OF DOCUMENTS
- SEARCH FOR LIRC ITEMS IN OPAC - ONLINE PUBLIC ACCESS CATALOGUE
- LOOK FOR THE CALL NO. AND SEARCH ON THE SHELVES FOR BOOK SPINE HAVING NO. MATCHING WITH THE AUTHOR MARK



- [sfimarlibrary.firstray.in](http://sfimarlibrary.firstray.in)

A close-up photograph of a person's hand holding a black tablet. The background is a library with wooden bookshelves filled with books. The text is overlaid on a semi-transparent orange banner at the bottom of the image.

# E-LEARNING RESOURCES IN SFIMAR LIRC



## ACE KP

- 40,000 Indian Companies, 40 major Industries.
- >10-years Financials, MF – 48 AMCs, 15000 schemes
- [app.myloft.xyz](http://app.myloft.xyz)

## ABI Inform

- Business Journals database - 2157 Scholarly journals, 741 Trade journals, 125 Magazines, 17 newspapers, 19 Wire Feeds,
- Full text articles - Doctoral dissertations and Master's thesis, Newspapers from 1984.
- [app.myloft.xyz](http://app.myloft.xyz) or
- <http://search.proquest.com>

# J-Gate

- E-journal portal
- 13,326 - publishers, 45,636 – e-journals, 23,383 open-access journals
- [app.myloft.xyz](http://app.myloft.xyz) or <http://jgateplus.com/search/>

# N-List

- 6000+ e-journals and 1,35000 e-books
- Access to world e-book (30,00000)
- Login Id for each Student/Faculty
- [app.myloft.xyz](http://app.myloft.xyz) or <http://nlist.inflibnet.ac.in>

# NDL

- Repository of repositories, initiative of MHRD and IIT, Kharagpur.
- Content in 70 languages from Primary to PG level.
- E-Books, Research papers, video lectures (NPTEL), animation and simulation.
- [app.myloft.xyz](http://app.myloft.xyz) or <https://ndl.iitkgp.ac.in/>

# SFIMAR KNOWLEDGE REPOSITORY ON DSPACE

SFIMAR

## DIGITAL REPOSITORY

E-Books  
Project Reports  
Publications  
Question papers  
Policies  
Rankings  
Results ....

[HTTP://192.168.1.9/CDSERVER/CDSERVER1.HTM](http://192.168.1.9/CDSERVER/CDSERVER1.HTM)

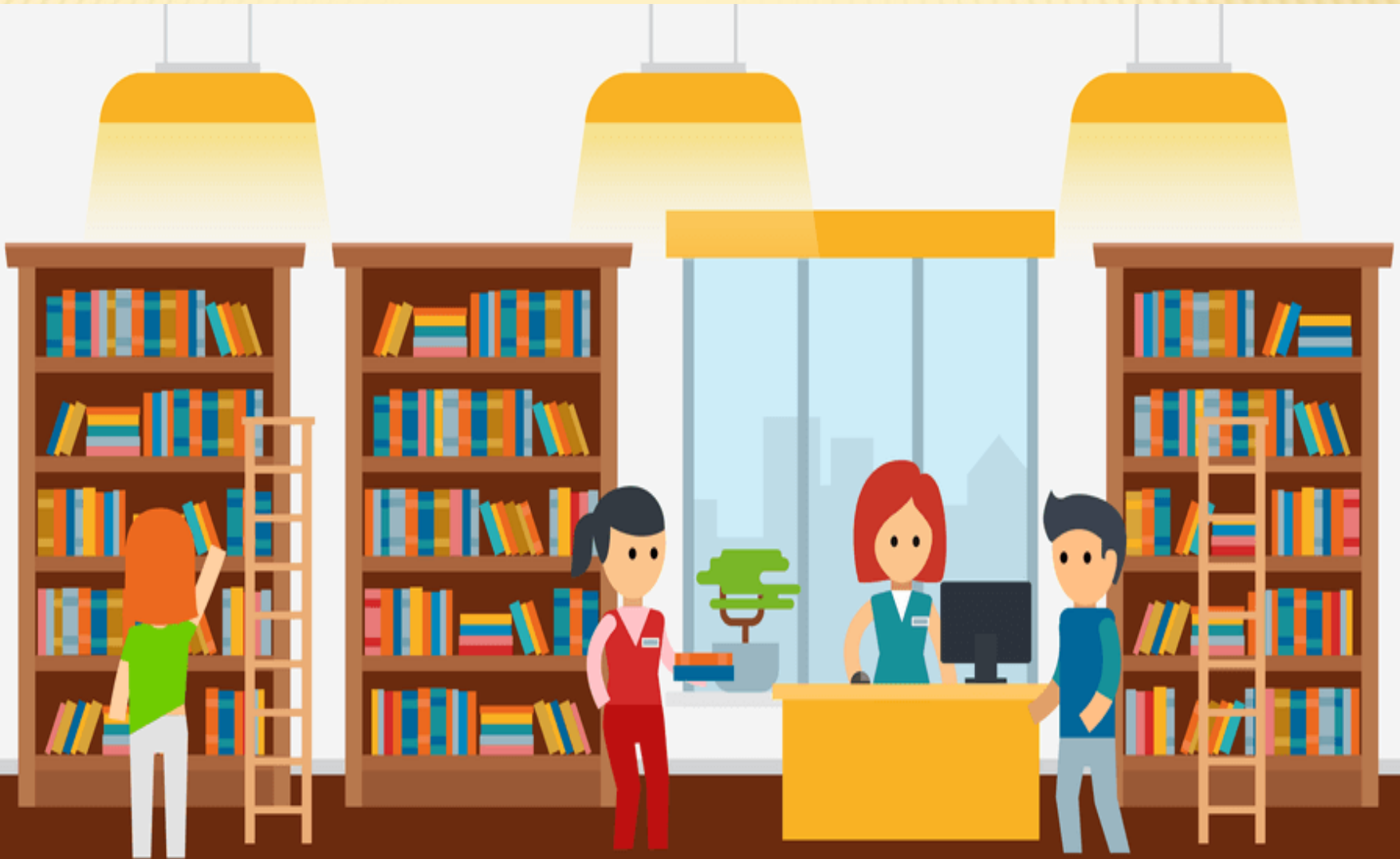
CDs  
DVDs

<https://sfimarlibrary.firstray.ac.in>

OPAC

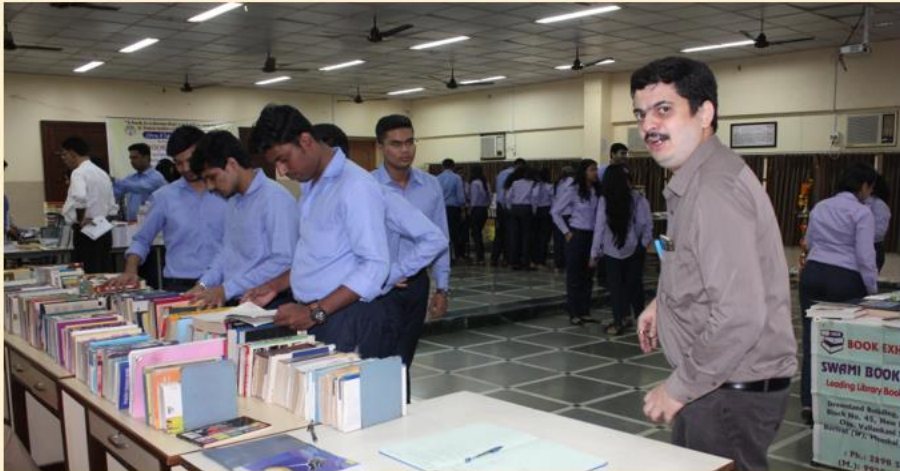


# SERVICES WE OFFER



- **CAS – Current Awareness Services comprising of Periodicals content page scanning and sharing with users, New publications, New Arrival Display, Articles display, Indexing and abstracting services**
- **SDI – Selective Dissemination of Information is met by catering to specific information queries in anticipation and demand**
- **Reference and Referral Services**
- **Inter Library Loan facility – procuring document/information from SFIMAR member libraries**
- **Reprography/Scanning facility**
- **LIRC Orientation, conduct sessions on Information literacy and database training.**
- **Plagiarism check using Urkund Software**

# ANNUAL BOOK EXHIBITION 2019



THANK YOU FOR VISITING!

SFIMARites are invited to select and recommend books for LIRC and personal collection

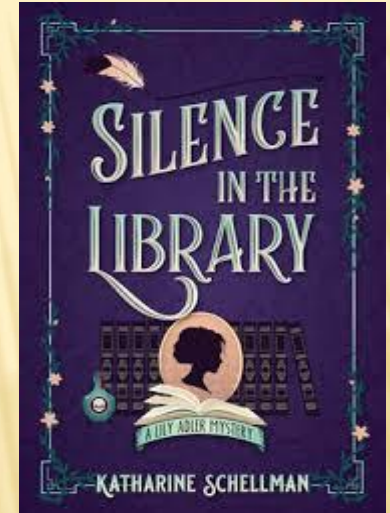


# SFIMAR LIRC Collaborates with ...

- ❖ **DELNET – Developing Library Network**
- ❖ **INFLIBNET – Information Library Network**
- ❖ **NDL – National Digital Library of India - IIT Kharagpur**
- ❖ **IGIDR – Indira Gandhi Institute of Development Research**





OpenAccess




# SFIMAR LIRC RULES



**Love your BOOKS**



Keep books away from messy things.



Turn pages carefully.

Put books away for the next time.

**NOTICE**

**Out Of Respect  
For Other Patrons  
Please Be Sure  
Your Cell  
Phone  
Is On Quiet  
Or Vibrate**



# LIRC Team



**DEDICATED TEAM AT SERVICE : MON - SAT 8 AM - 8 PM , SUN 11:30 AM - 5:30 PM**